

# Llandyfaelog 132 kV Substation

## Welcome to our event

**We are proposing a new 132 kV substation near Llandyfaelog. We are hosting a number of community events to introduce you to our proposals and answer any early questions you may have at this stage.**

National Grid Electricity Distribution (NGED) is proposing a new 132 kV substation and associated connecting infrastructure near Llandyfaelog. This is separate from National Grid Electricity Transmission's (NGET) ongoing application for a new 400 kV substation but sits within the same footprint and site. This means there will be no increase in the land proposed for new grid infrastructure as a result of our application.

Our proposed upgrades are designed to reinforce the existing 132 kV network between Carmarthen and Swansea, supporting the growth in electricity demand in Carmarthen and the wider county, which are currently fed from the Swansea North substation.

The electricity system is undergoing a fundamental transformation as the nature of demand and generation changes. We are seeing a rapid increase in the number of connections associated with small scale renewables (wind and solar), and the electrification of heat (heat pumps) and transport (electric vehicles), with demand for electricity set to double nationally by 2050. This places even greater importance on having a resilient grid that is fit for future electricity demand.



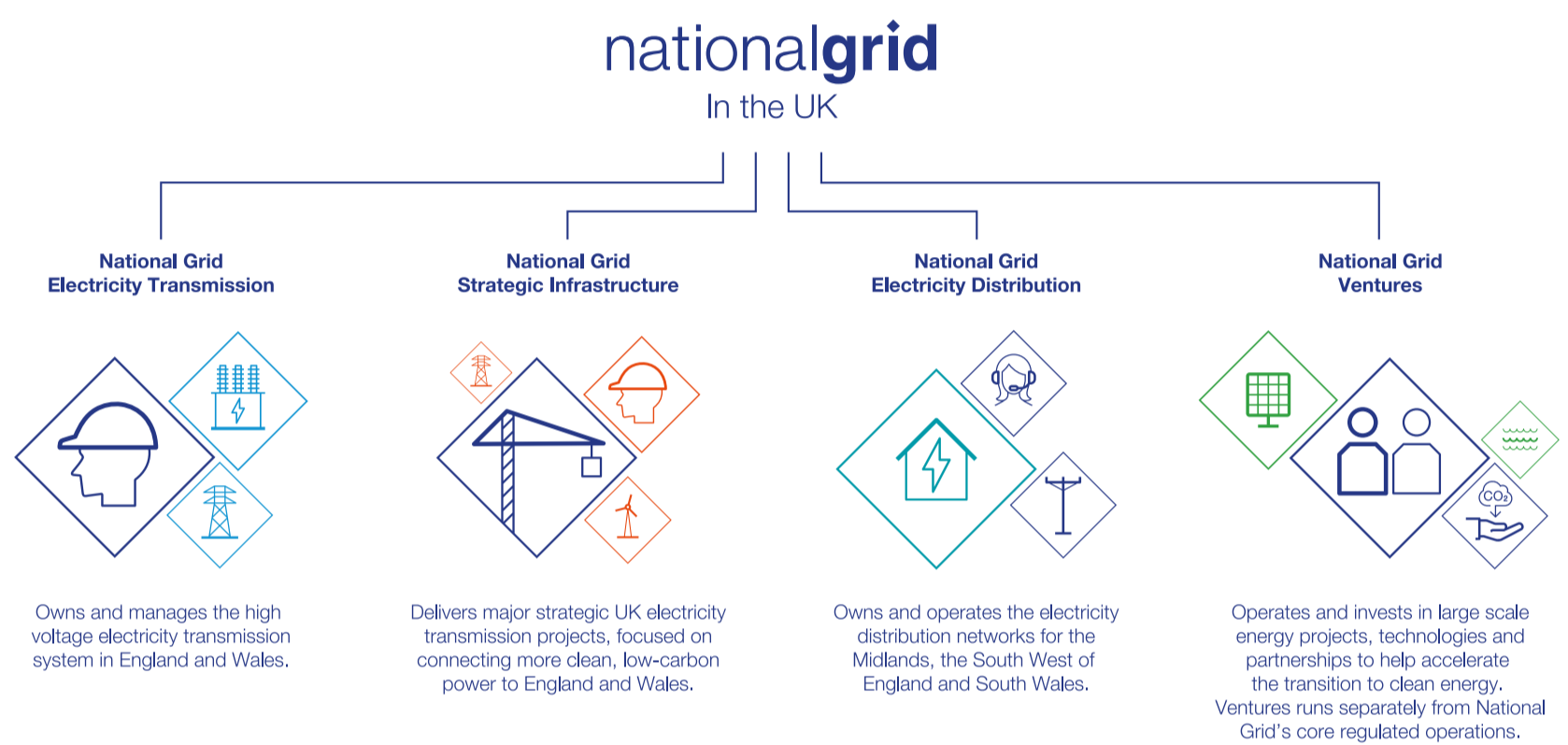
# Llandyfaelog 132 kV Substation

## Who are National Grid?

We sit at the heart of Wales's energy system, connecting millions of people and businesses safely, reliably and efficiently to the energy they use every day.

Within the National Grid Group there are four separate legal entities, each with individual responsibilities and roles.

It is National Grid Electricity Distribution (NGED) that is developing plans for a 132 kV substation at Llandyfaelog.



## National Grid Electricity Distribution (NGED)

NGED (formerly Western Power Distribution) is your local distribution network operator (DNO) – operating as a separate legal entity within the National Grid Group. We take power from the transmission network operated by NGET, lower the voltage and distribute it through our network to homes and businesses across South and West Wales. We have a legal obligation to connect both electricity demand and generation to our network, while providing a reliable power supply and maintaining a resilient grid.

As part of this, we need to make sure the grid is ready for the increased demand that is forecast over the coming decades.

We serve nearly 20 million people in the Midlands, South West, and South and West Wales – delivering essential power to over 8 million homes and businesses. In South and West Wales, we serve over 2 million people and are investing £1.2 billion over 2023 – 2028 to maintain, reinforce and upgrade the electricity network.

# Llandyfaelog 132 kV Substation



## What is a substation and why is it needed?

**Substations are critical parts of the transmission and distribution networks. They enable electricity to be moved around the country securely and reliably.**

One of the main roles of a substation is converting electricity into different voltages. This is needed so the electricity can be transmitted across the country at high voltages, and then sent at lower voltages to the end customer on the local distribution network.

We are investing billions over the coming years to upgrade our electricity networks which are at the centre of Wales's growth, security, and affordability ambitions.

This involves connecting new homegrown sources of energy; enabling our networks to keep up with increasing energy demand across the country; facilitating the electrification of current and emerging industries; innovating across new technologies needed for an increasingly flexible energy system; and acting as a critical enabler of local and national growth.



# Llandyfaelog 132 kV Substation

## Our proposals

**We are bringing forward proposals for a new 132 kV substation near Llandyfaelog to help meet the growing demand for electricity in the wider network around and north of Carmarthen.**

Our proposed upgrades to the electricity distribution network are designed to reinforce the existing 132 kV network between Carmarthen and Swansea.

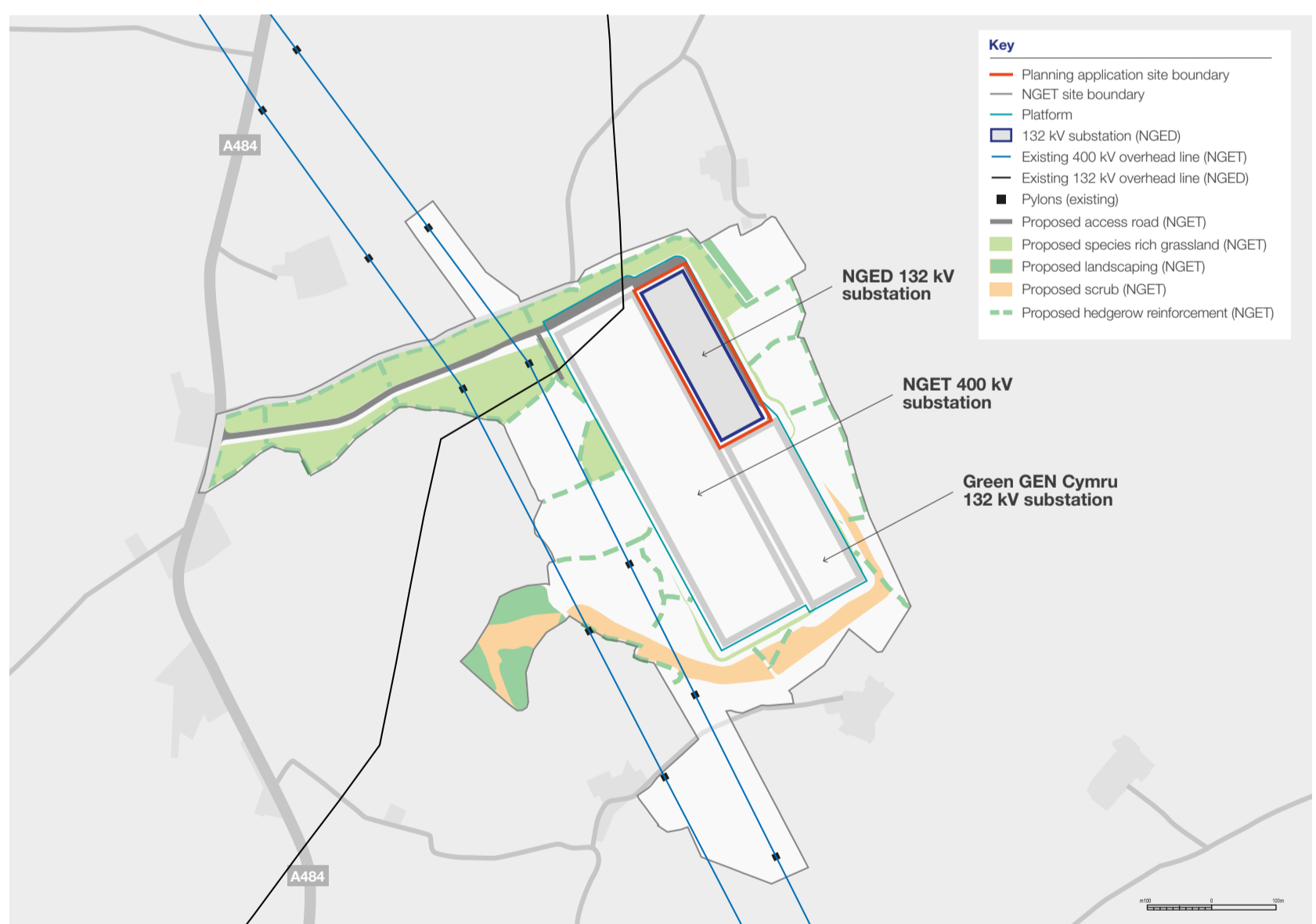
These upgrades will improve network resilience and provide capacity to meet forecast increases in demand in the Carmarthen area, as well as the wider network to the north, which is currently fed from the Swansea North substation. It will also create capacity for generation customers, supporting the uptake of low carbon technologies like electric vehicles, heat pumps, wind and solar.

Our proposals are separate from NGET's application for a new 400 kV substation but will sit within the same site footprint. Co-locating our substations minimises the need for new

overhead lines on both of the National Grid-owned transmission and distribution networks. The NGET planning application, which will be submitted to Carmarthenshire County Council, includes the provision of a level platform for our 132 kV substation.

By combining all groundworks into one application, this will ensure more efficient land use, effective drainage and reduced construction impacts for the three substations. We will be working closely with NGET throughout.

Once operational, our 132 kV substation will receive electricity from NGET's 400 kV substation and distribute it across the network to be converted to a lower voltage for safe distribution to homes and businesses.



# Llandyfaelog 132 kV Substation

## What happens next

**Ahead of submitting a planning application to Carmarthenshire County Council, we will hold a Pre-Application Consultation in Spring 2026 where we will ask for your feedback on our further developed proposals.**

We will continue our discussions with landowners and undertake surveys, technical and environmental work in and around the proposed substation site to give us more information about the area and to help inform our plans. You may see us, and our contractors, working in and around the proposed site.

- ◆ **2025** – early technical work and discussions with landowners
- ◆ **Early 2026** – early community engagement
- ◆ **Spring 2026** – Pre-Application Consultation (PAC)
- ◆ **Late Spring 2026** – submission of planning application

## Stay in touch

To register to receive project updates about our proposed 132 kV substation at Llandyfaelog, please sign up using the QR code.

You can find out more information by visiting our project website at [commercial.nationalgrid.co.uk/llandyfaelog](https://commercial.nationalgrid.co.uk/llandyfaelog)

You can also get in touch with our community relations team on:



Email: [ngedllandyfaelog@nationalgrid.com](mailto:ngedllandyfaelog@nationalgrid.com)



Phone: 0800 1884 484



# Llandyfaelog 132 kV Substation



## Working with the community

**As the DNO for South and West Wales, we are committed to working closely with the community and stakeholders to understand how this project can maximise benefits for the local area.**

Our team is based in, and part of, the communities we serve. We have 1,000 employees based in South and West Wales, and our community engagement is ongoing, with clear commitments to delivering meaningful social value to our customers. This includes providing funding for local schools to install solar panels on their buildings; grants for local projects and organisations; educational workshops for schoolchildren; and volunteering hours for local events and causes.

We are committed to working with third sector bodies, such as charities, social enterprises, and community groups to promote STEM skills, tackle fuel poverty and promote energy affordability in local communities.

**Alongside colleagues at NGET, we look forward to working with your community to ensure lasting benefits that work for you.**



**Delivering environmental enhancements**



**Supporting employment, education, and skills development**



**Promoting health and wellbeing in the community**



**Investing in community infrastructure and facilities**



**Alleviating fuel poverty and enhancing energy efficiency**



**Supporting communities to decarbonise**