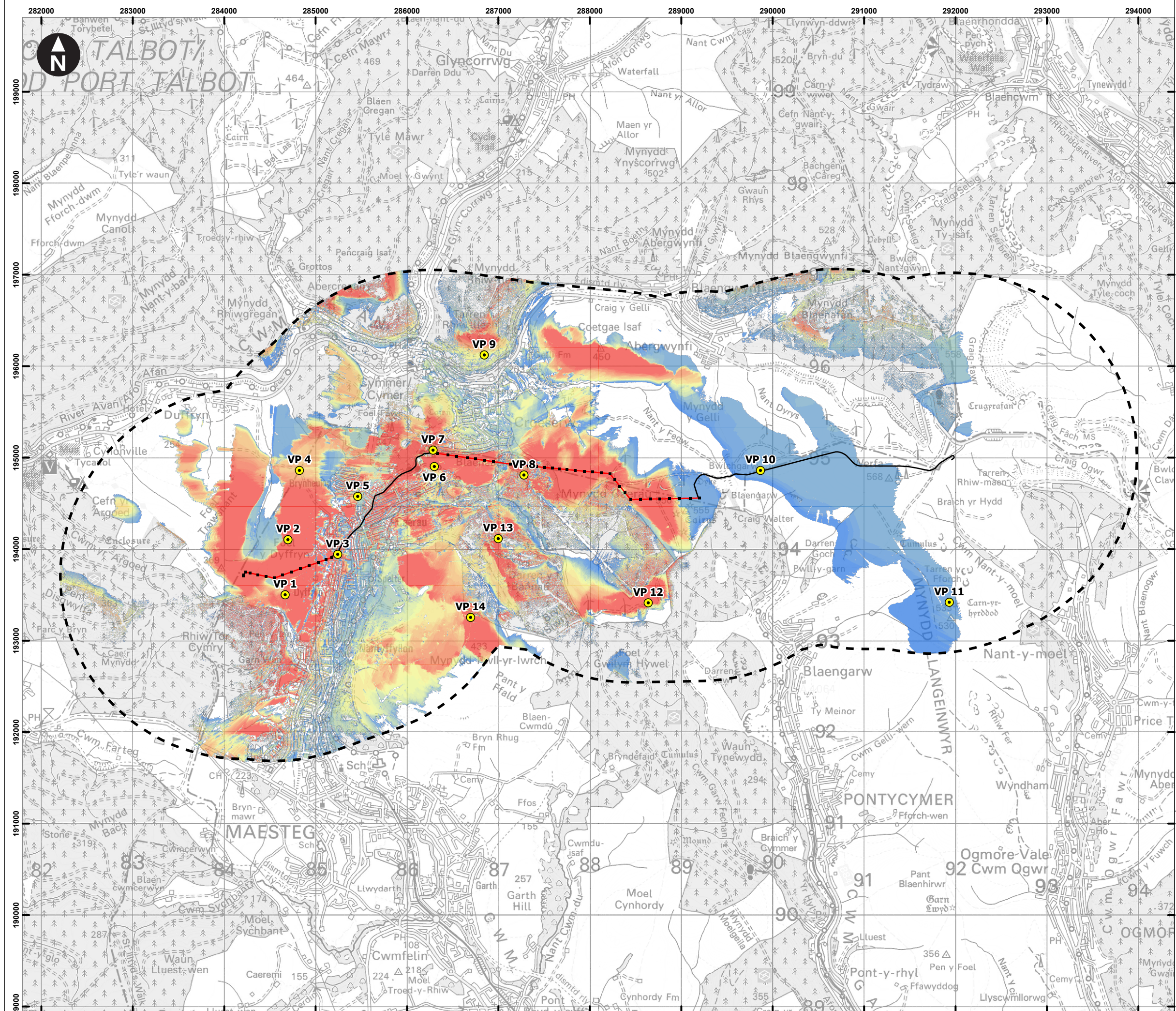
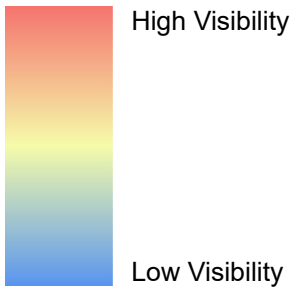


C:\Users\UKEXH77\WSP - GIS\02_APRX\UK0028130_UpperOgmore_0076_v2.aprx Originator: UKEXH777



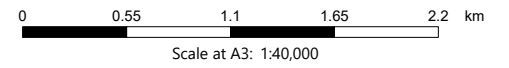
- Key
- Overhead Line
 - Underground Cable
 - OHL 66kV Grid Connection Poles
 - LVIA Study Area
 - LVIA Viewpoints

Areas Where the Proposed 66kV Grid Connection Poles are Theoretically Visible



This drawing was based on a computer generated Zone of Theoretical Visibility (ZTV). The areas shown indicate the maximum theoretical visibility of the proposed OHL grid connection poles using 1m Digital Surface Model (DSM) LiDAR. The ZTV accounts for the visibility screening effects of buildings and vegetation.

The ZTV was generated using OHL grid connection pole heights varying between 10-15m (ABGL), using a viewer height of 1.6m.



© Crown copyright and database rights 2025 Ordnance Survey AC0000808122

National Grid Electricity Distribution
Upper Ogmore Grid Connection
Environmental Statement
Chapter 6 - Landscape Visual Impact
Assessment

**Figure 6.1
Zone of Theoretical Visibility and
Viewpoint Locations Plan**

October 2025

