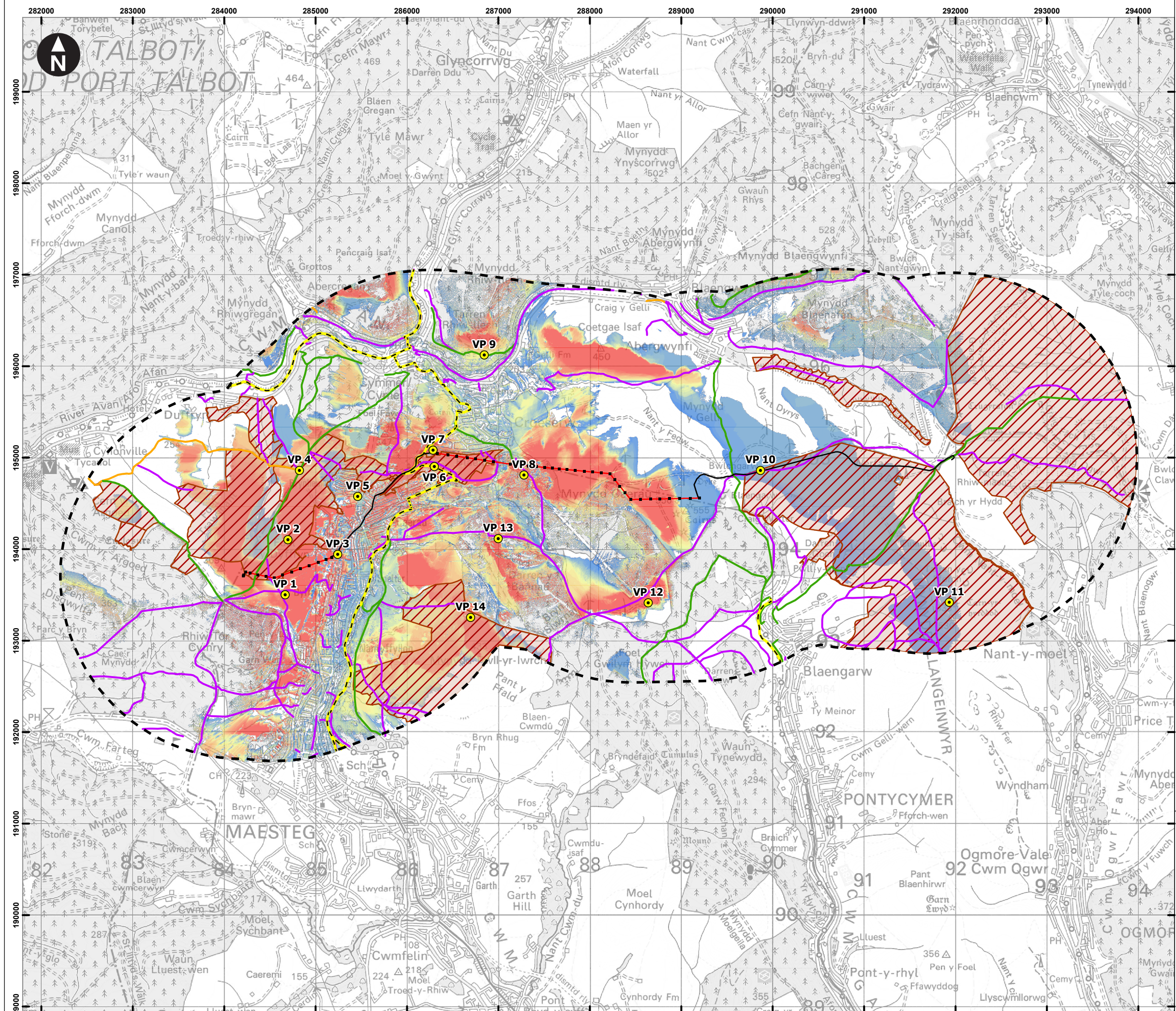


C:\Users\UKEXH77\WSP - GIS\02_APRX\UK0028130_UpperOgmore_0077_v3.aprx Originator: UKEXH777



Key

- Overhead Line
- Underground Cable
- OHL 66kV Grid Connection Poles
- LVIA Study Area
- LVIA Viewpoints
- Open Access Land
- National Cycle Network

Public Right of Way

- Bridleway
- Footpath
- Byway

Areas Where the Proposed 66kV Grid Connection Poles are Theoretically Visible

This drawing was based on a computer generated Zone of Theoretical Visibility (ZTV). The areas shown indicate the maximum theoretical visibility of the proposed OHL grid connection poles using 1m Digital Surface Model (DSM) LiDAR. The ZTV accounts for the visibility screening effects of buildings and vegetation.

The ZTV was generated using OHL grid connection pole heights varying between 10-15m (ABGL), using a viewer height of 1.6m.

0 0.5 1 1.5 2 km
Scale at A3: 1:40,000

© Crown copyright and database rights 2025 Ordnance Survey
AC0000808122

National Grid Electricity Distribution
Upper Ogmore Grid Connection
Environmental Statement
Chapter 6 - Landscape Visual Impact
Assessment

Figure 6.2
Public Rights of Way Plan

