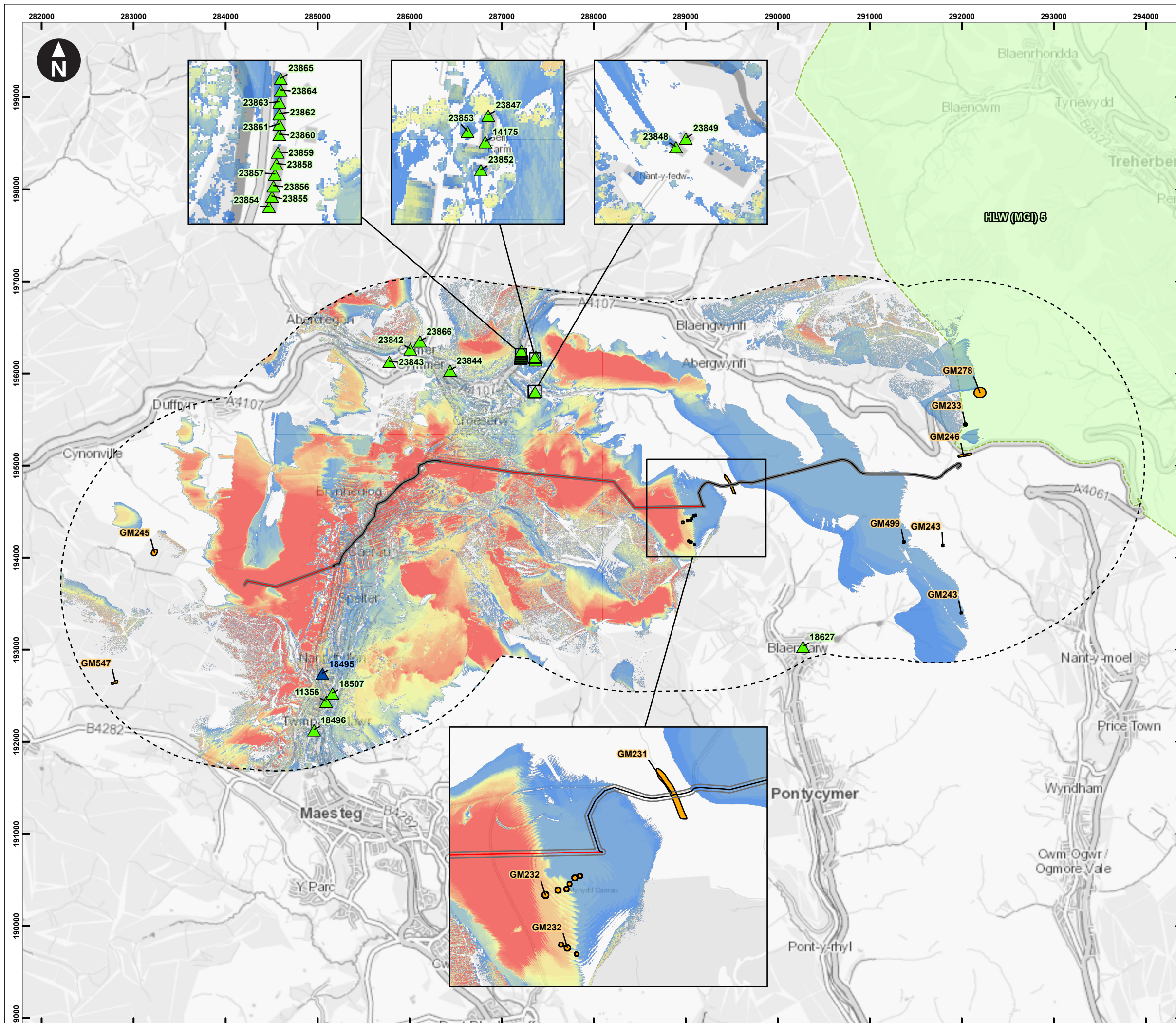


C:\Users\UKEXH77\WSP - GIS\02_APRX\UK0028130_UpperOgmore_0082_v5.aprx Originator: UKEXH777



Key

- Site Boundary
- Overhead Line
- Underground Cable
- 2km Study Area
- Scheduled Monuments
- Registered Historic Landscape

Listed Buildings

Grade

- I (Red triangle)
- II* (Blue triangle)
- II (Green triangle)

Areas Where the Proposed 66kV Grid Connection Poles are Theoretically Visible

High Visibility (Red)

Low Visibility (Blue)

This drawing was based on a computer generated Zone of Theoretical Visibility (ZTV). The areas shown indicate the maximum theoretical visibility of the proposed OHL grid connection poles using 1m Digital Surface Model (DSM) LiDAR. The ZTV accounts for the visibility screening effects of buildings and vegetation.

The ZTV was generated using OHL grid connection pole heights varying between 10-15m (ABGL), using a viewer height of 1.6m.

0 0.5 1 1.5 2 km
Scale at A3: 1:40,000

OS Open Greyscale: Contains OS data © Crown Copyright and database right 2020

Designated Historic Asset GIS Data, The Welsh Historic Environment Service (Cadw), 11/02/2025, licensed under the Open Government Licence <http://www.nationalarchives.gov.uk/doc/open-government-licence/version/3/>

National Grid Electricity Distribution
Upper Ogmore Grid Connection
Environmental Statement
Chapter 10 - Historic Environment

Figure 10.2
Designated Historic Assets and ZTV within 2km