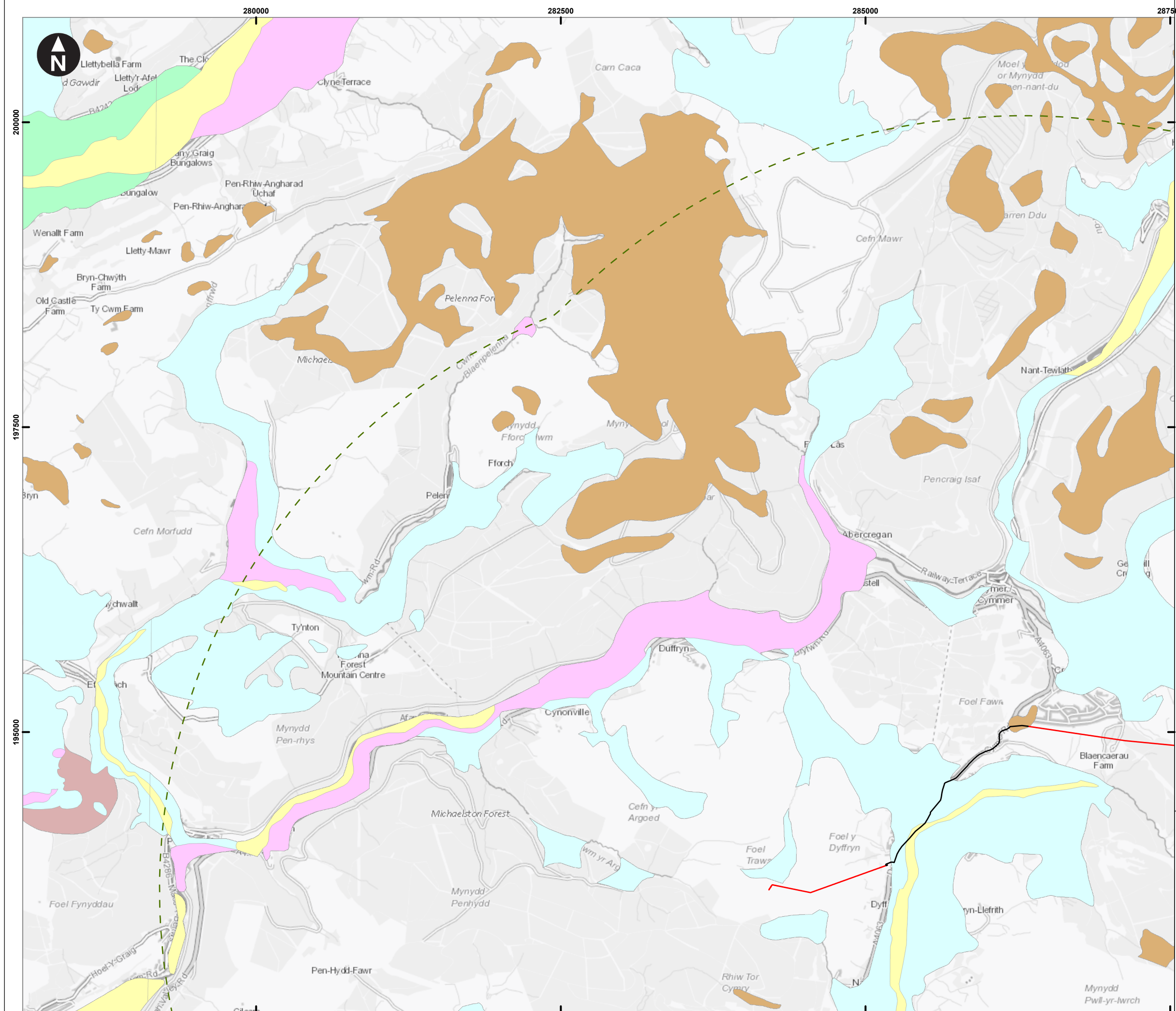


C:\Users\UKEXH77\WSP - GIS\02_APRX\UK0028130_UpperOgmore_0111_v2.aprx Originator: UKEXH777



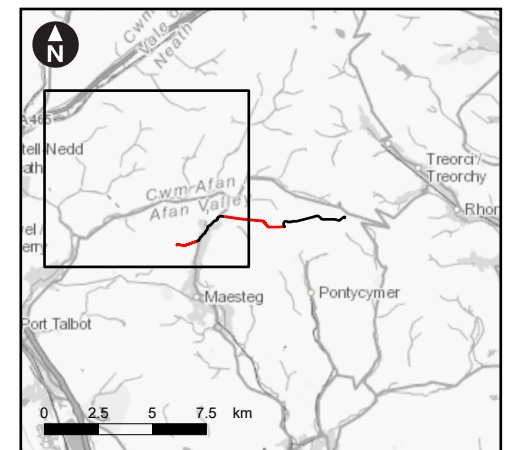
Key

- Overhead Line
- Underground Cable
- - - Study Area

BGS 1:50k Superficial Deposit

- Peat - Peat; Sedimentary Superficial Deposit Formed Between 2.588 Million Years Ago and the Present During the Quaternary Period
- Alluvium - Clay, Silt, Sand and Gravel; Sedimentary Superficial Deposit Formed Between 11.8 Thousand Years Ago and the Present During the Quaternary Period
- Glaciofluvial Deposits, Devensian - Sand and gravel; Sedimentary Superficial Deposit Formed Between 116 and 11.8 Thousand Years Ago During the Quaternary Period
- Alluvial Fan Deposits; Sand and gravel - Sedimentary Superficial Deposit Formed Between 2.588 Million Years Ago and the Present During the Quaternary Period
- Till, Devensian; Diamicton - Sedimentary Superficial Deposit Formed Between 116 and 11.8 Thousand Years Ago During the Quaternary Period
- Hummocky (moundy) Glacial Deposits, Devensian; Sand and Gravel - Sedimentary Superficial Deposit Formed Between 116 and 11.8 Thousand Years Ago During the Quaternary Period

OS Open Greyscale: Contains OS data © Crown Copyright and database right 2020
BGS 50000 scale digital geology:



0 500 1,000 1,500 m
Scale at A3: 1:30,000

National Grid Electricity Distribution
Upper Ogmore Grid Connection
Environmental Statement
Chapter 11 - Water Resources and Flood Risk
Sheet 1 of 6

C:\Users\UKEXH77\WSP - GIS\02_APRX\UK0028130_UpperOgmore_0111_v2.aprx Originator: UKEXH777



Key

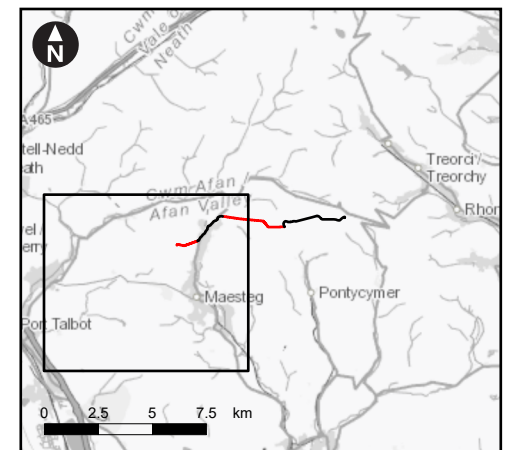
- Overhead Line
- Underground Cable
- - - Study Area

BGS 1:50k Superficial Deposit

- Peat - Peat; Sedimentary Superficial Deposit Formed Between 2.588 Million Years Ago and the Present During the Quaternary Period
- Alluvium - Clay, Silt, Sand and Gravel; Sedimentary Superficial Deposit Formed Between 11.8 Thousand Years Ago and the Present During the Quaternary Period
- Glaciofluvial Deposits, Devensian - Sand and gravel; Sedimentary Superficial Deposit Formed Between 116 and 11.8 Thousand Years Ago During the Quaternary Period
- Alluvial Fan Deposits; Sand and gravel - Sedimentary Superficial Deposit Formed Between 2.588 Million Years Ago and the Present During the Quaternary Period
- Till, Devensian; Diamicton - Sedimentary Superficial Deposit Formed Between 116 and 11.8 Thousand Years Ago During the Quaternary Period
- Hummocky (moundy) Glacial Deposits, Devensian; Sand and Gravel - Sedimentary Superficial Deposit Formed Between 116 and 11.8 Thousand Years Ago During the Quaternary Period

Scale at A3: 1:30,000

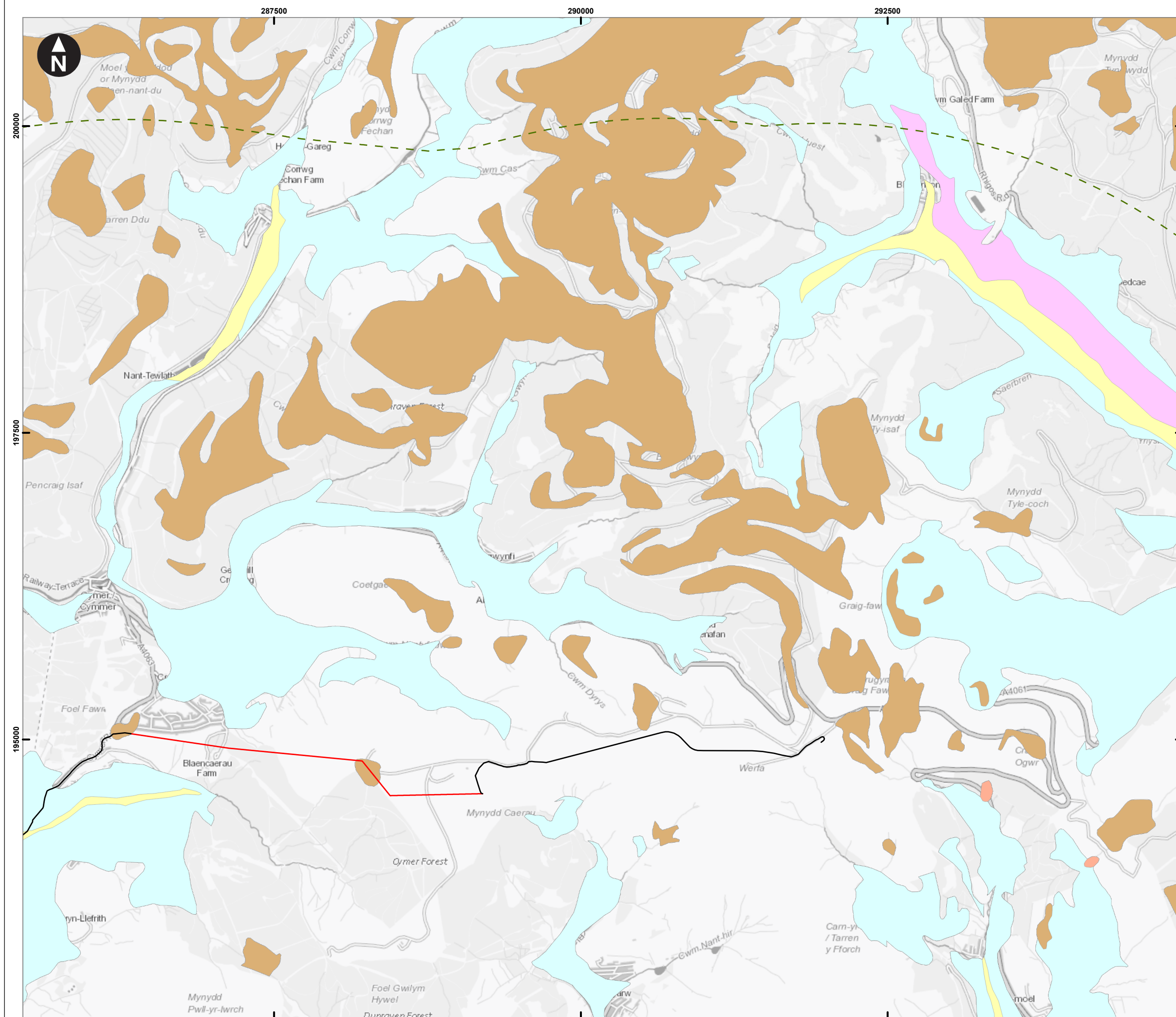
OS Open Greyscale: Contains OS data © Crown Copyright and database right 2020
BGS 50000 scale digital geology:



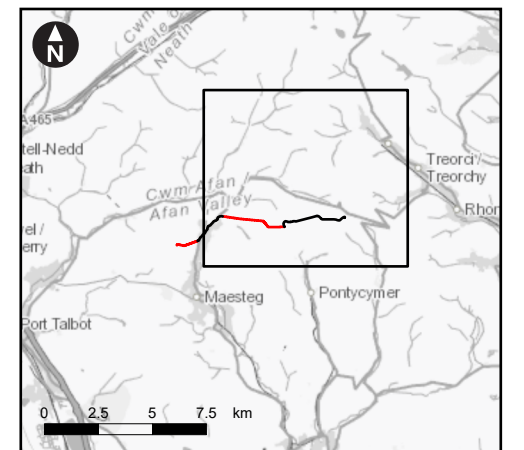
National Grid Electricity Distribution
Upper Ogmore Grid Connection
Environmental Statement
Chapter 11 - Water Resources and Flood Risk
Sheet 2 of 6

Figure 11.2
Hydrogeology; Superficial Deposits

C:\Users\UKEXH77\WSP - GIS\02_APRX\UK0028130_UpperOgmore_0111_v2.aprx Originator: UKEXH777



- Key**
- Overhead Line
 - Underground Cable
 - - - Study Area
- BGS 1:50k Superficial Deposit**
- Peat - Peat; Sedimentary Superficial Deposit Formed Between 2.588 Million Years Ago and the Present During the Quaternary Period
 - Alluvium - Clay, Silt, Sand and Gravel; Sedimentary Superficial Deposit Formed Between 11.8 Thousand Years Ago and the Present During the Quaternary Period
 - Glaciofluvial Deposits, Devensian - Sand and gravel; Sedimentary Superficial Deposit Formed Between 116 and 11.8 Thousand Years Ago During the Quaternary Period
 - Alluvial Fan Deposits; Sand and gravel - Sedimentary Superficial Deposit Formed Between 2.588 Million Years Ago and the Present During the Quaternary Period
 - Till, Devensian; Diamicton - Sedimentary Superficial Deposit Formed Between 116 and 11.8 Thousand Years Ago During the Quaternary Period
 - Hummocky (moundy) Glacial Deposits, Devensian; Sand and Gravel - Sedimentary Superficial Deposit Formed Between 116 and 11.8 Thousand Years Ago During the Quaternary Period



0 500 1,000 1,500 m
Scale at A3: 1:30,000

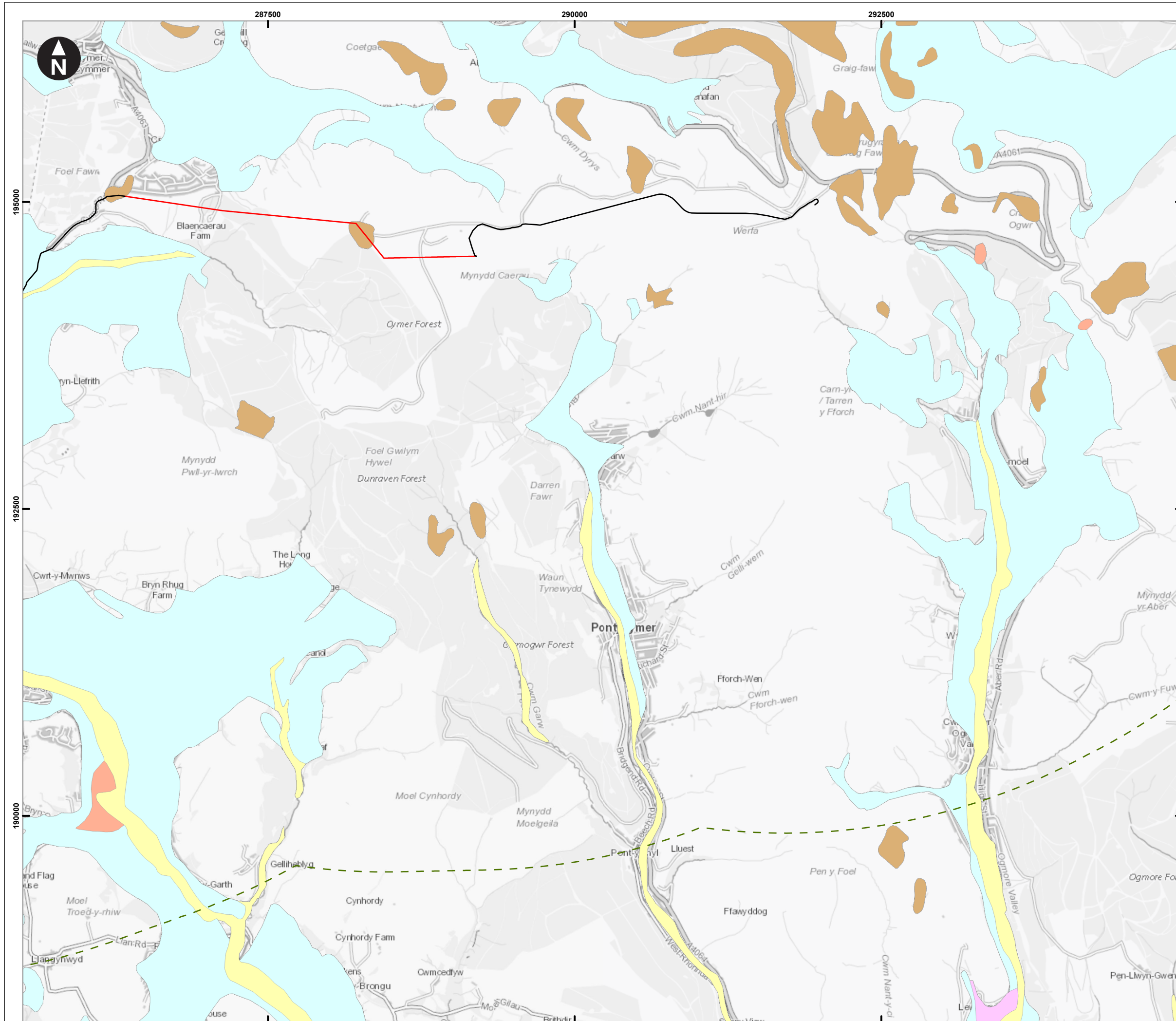
OS Open Greyscale: Contains OS data © Crown Copyright and database right 2020
BGS 50000 scale digital geology:

National Grid Electricity Distribution
Upper Ogmore Grid Connection
Environmental Statement
Chapter 11 - Water Resources and Flood Risk
Sheet 3 of 6

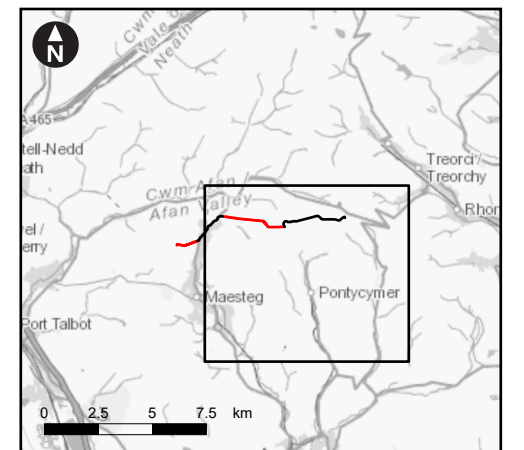
Figure 11.2
Hydrogeology; Superficial Deposits



C:\Users\UKEXH77\WSP - GIS\02_APRX\UK0028130_UpperOgmore_0111_v2.aprx Originator: UKEXH777



- Key**
- Overhead Line
 - Underground Cable
 - Study Area
- BGS 1:50k Superficial Deposit**
- Peat - Peat; Sedimentary Superficial Deposit Formed Between 2.588 Million Years Ago and the Present During the Quaternary Period
 - Alluvium - Clay, Silt, Sand and Gravel; Sedimentary Superficial Deposit Formed Between 11.8 Thousand Years Ago and the Present During the Quaternary Period
 - Glaciofluvial Deposits, Devensian - Sand and gravel; Sedimentary Superficial Deposit Formed Between 116 and 11.8 Thousand Years Ago During the Quaternary Period
 - Alluvial Fan Deposits; Sand and gravel - Sedimentary Superficial Deposit Formed Between 2.588 Million Years Ago and the Present During the Quaternary Period
 - Till, Devensian; Diamicton - Sedimentary Superficial Deposit Formed Between 116 and 11.8 Thousand Years Ago During the Quaternary Period
 - Hummocky (moundy) Glacial Deposits, Devensian; Sand and Gravel - Sedimentary Superficial Deposit Formed Between 116 and 11.8 Thousand Years Ago During the Quaternary Period



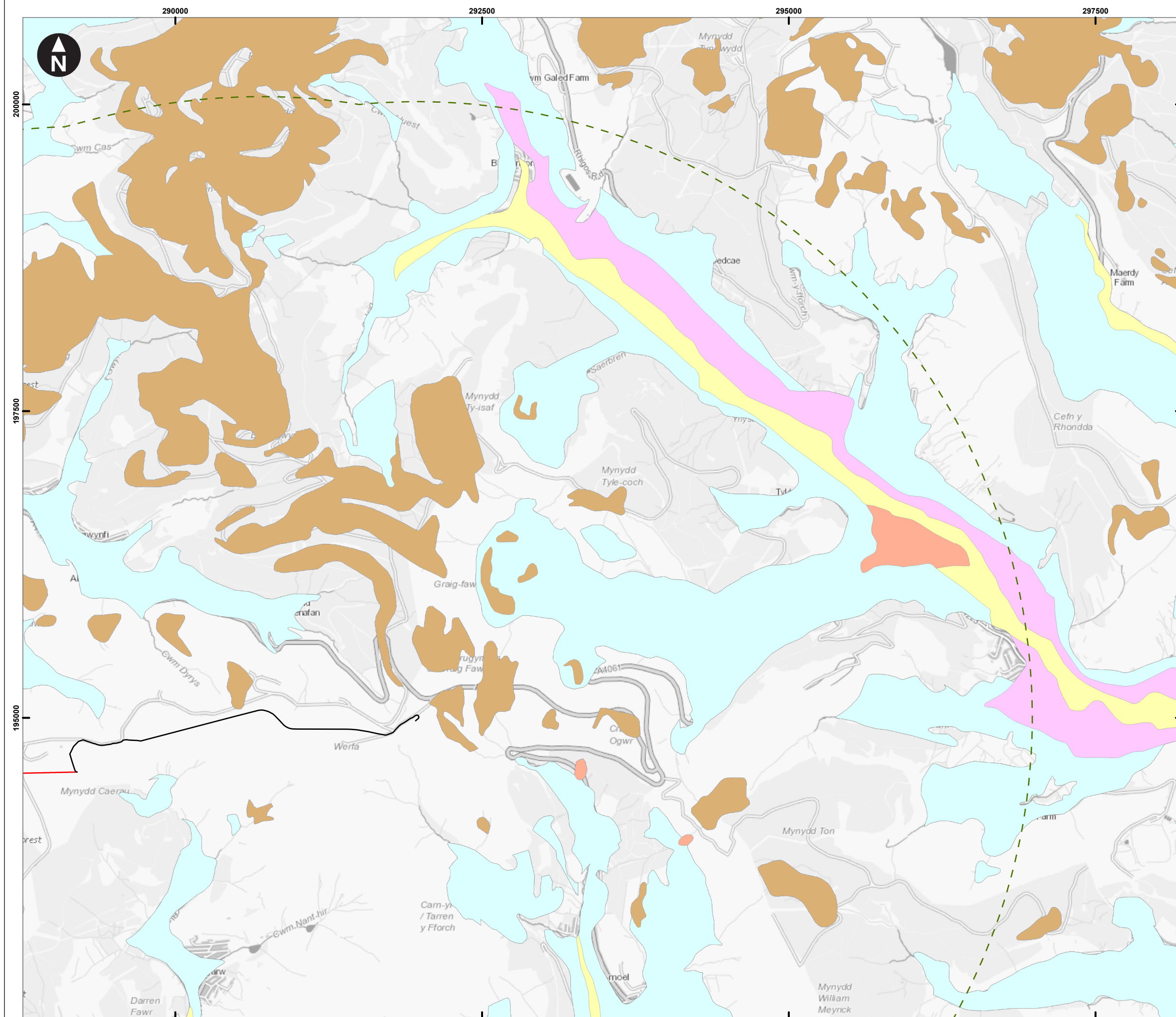
0 500 1,000 1,500 m
Scale at A3: 1:30,000

OS Open Greyscale: Contains OS data © Crown Copyright and database right 2020
BGS 50000 scale digital geology:

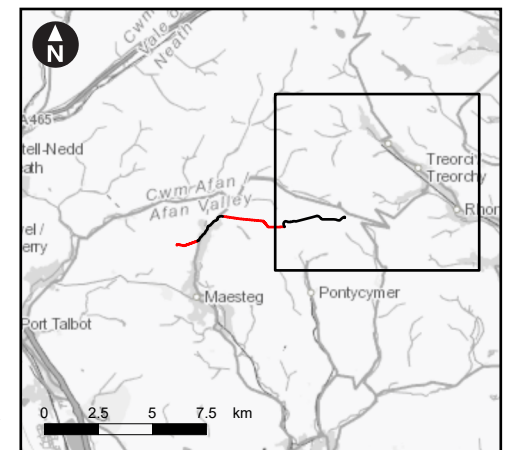
National Grid Electricity Distribution
Upper Ogmore Grid Connection
Environmental Statement
Chapter 11 - Water Resources and Flood Risk
Sheet 4 of 6

Figure 11.2
Hydrogeology; Superficial Deposits

C:\Users\UKEXH77\WSP - GIS\02_APRX\UK0028130_UpperOgmore_0111_v2.aprx Originator: UKEXH777



- Key**
- Overhead Line
 - Underground Cable
 - Study Area
- BGS 1:50k Superficial Deposit**
- Peat - Peat; Sedimentary Superficial Deposit Formed Between 2.588 Million Years Ago and the Present During the Quaternary Period
 - Alluvium - Clay, Silt, Sand and Gravel; Sedimentary Superficial Deposit Formed Between 11.8 Thousand Years Ago and the Present During the Quaternary Period
 - Glaciofluvial Deposits, Devensian - Sand and gravel; Sedimentary Superficial Deposit Formed Between 116 and 11.8 Thousand Years Ago During the Quaternary Period
 - Alluvial Fan Deposits; Sand and gravel - Sedimentary Superficial Deposit Formed Between 2.588 Million Years Ago and the Present During the Quaternary Period
 - Till, Devensian; Diamicton - Sedimentary Superficial Deposit Formed Between 116 and 11.8 Thousand Years Ago During the Quaternary Period
 - Hummocky (moundy) Glacial Deposits, Devensian; Sand and Gravel - Sedimentary Superficial Deposit Formed Between 116 and 11.8 Thousand Years Ago During the Quaternary Period



0 500 1,000 1,500 m
Scale at A3: 1:30,000

OS Open Greyscale: Contains OS data © Crown Copyright and database right 2020
BGS 50000 scale digital geology:

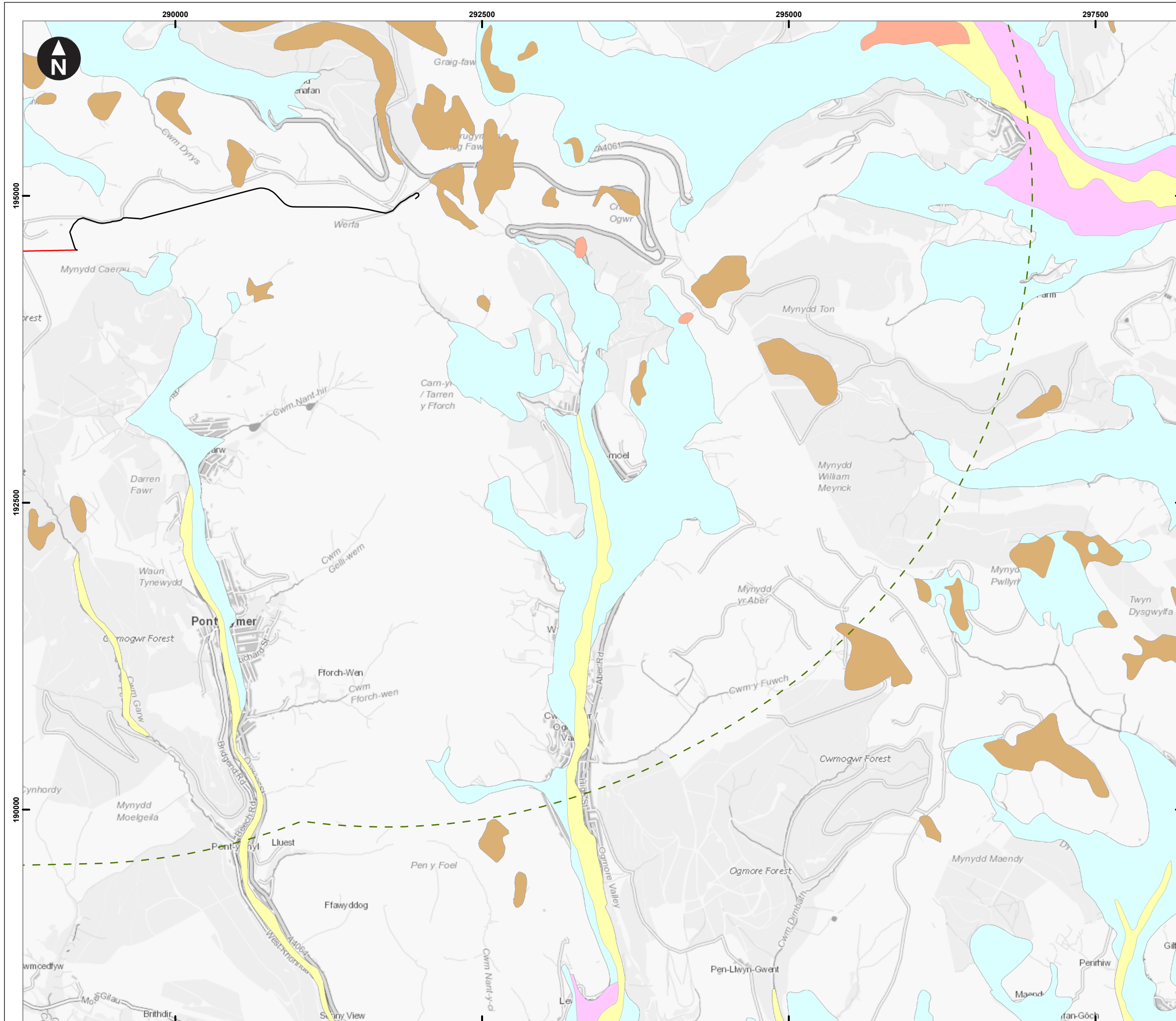
National Grid Electricity Distribution
Upper Ogmore Grid Connection
Environmental Statement
Chapter 11 - Water Resources and Flood Risk
Sheet 5 of 6

Figure 11.2
Hydrogeology; Superficial Deposits

November 2025



C:\Users\UKEXH77\WSP - GIS\02_APRX\UK0028130_UpperOgmore_0111_v2.aprx Originator: UKEXH777



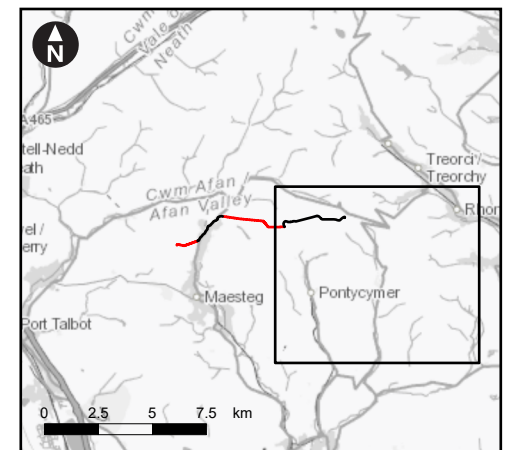
Key

- Overhead Line
- Underground Cable
- Study Area

BGS 1:50k Superficial Deposit

- Peat - Peat; Sedimentary Superficial Deposit Formed Between 2.588 Million Years Ago and the Present During the Quaternary Period
- Alluvium - Clay, Silt, Sand and Gravel; Sedimentary Superficial Deposit Formed Between 11.8 Thousand Years Ago and the Present During the Quaternary Period
- Glaciofluvial Deposits, Devensian - Sand and gravel; Sedimentary Superficial Deposit Formed Between 116 and 11.8 Thousand Years Ago During the Quaternary Period
- Alluvial Fan Deposits; Sand and gravel - Sedimentary Superficial Deposit Formed Between 2.588 Million Years Ago and the Present During the Quaternary Period
- Till, Devensian; Diamicton - Sedimentary Superficial Deposit Formed Between 116 and 11.8 Thousand Years Ago During the Quaternary Period
- Hummocky (moundy) Glacial Deposits, Devensian; Sand and Gravel - Sedimentary Superficial Deposit Formed Between 116 and 11.8 Thousand Years Ago During the Quaternary Period

OS Open Greyscale: Contains OS data © Crown Copyright and database right 2020
BGS 50000 scale digital geology:



0 500 1,000 1,500 m
Scale at A3: 1:30,000

National Grid Electricity Distribution
Upper Ogmore Grid Connection
Environmental Statement
Chapter 11 - Water Resources and Flood Risk
Sheet 6 of 6

Figure 11.2
Hydrogeology; Superficial Deposits